



VinciSmile®



VINCISMILE GROUP LLC

Add: 20524 Carrey Rd. Walnut, CA 91789, USA

Email: marketing@vincismile.com Tel: +1 626 283 5808

Web: www.vincismile.com Shop with us online at store.vincismile.com

[f](#) [@](#) [v](#) [in](#)
Follow @VinciSmile

LAB SOLUTION

Your Partner in Digital Dentistry



VinciSmile Group LLC is a worldwide dental supplier headquartered in Los Angeles, California USA. We offer a wide range of dental lab and clinical solutions, including NOBILDENT Resin Teeth, NOBILCAM CAD/CAM Materials, NOBILTRAY Lab Materials, PERFIT Elastomeric Impression Materials, Clinical Restorative Materials, and Invisible Orthodontic Appliance, and more. Our company is committed to providing exceptional support services, including training for both employees and customers. As an FDA-registered company, we adhere to strict production quality assurance standards and maintain ISO 13485 certification.



VinciSmile is committed to being your reliable clinical partner, providing top-notch dental solutions. We guarantee excellent clinical practice with the use of high-quality materials, ensuring the best outcomes for the patients.



NOBILCAM CAD/CAM solution provides various types of Zirconia and PMMA DISC to dental laboratories in order to have a positive impact on dental patient health.



NOBILDENT teeth are designed to look completely natural in the mouth due to the gentle blend of translucent incisal and lifelike reflective esthetics of the labial surface.



> CAD/CAM Material

01 NOBILCAM Zirconia	
· GM-3D Zirconia (Gradient Multilayer)	03
· MHT Zirconia (Multilayer High Translucent)	07
· HT Zirconia (High Translucent)	08
· AT Zirconia (Anterior Translucent)	09
· HS Zirconia (High Strength)	10
02 NOBILCAM PMMA	
· Multilayer PMMA	17
· Monolayer PMMA	18
· Clear PMMA	18
· Pink PMMA	18
03 NOBILCAM Flexible Disc	19
04 3D Print Material	21
05 Milling Burs	22

> Dental Lab Material

06 NOBIDENT Denture Teeth	
· NOBIDENT Prime DXL	25
· NOBIDENT Select XL	29
07 Denture Base Polymers	
· Traditional Heat Curing	39
· Self Curing	39
· Fast Heat Curing	40
08 Light Curing Material	
· NOBILTRAY	43
· NOBILCURE	44
09 Duplication Silicones	
· PERFIT A-Silicone for Gingival Mask	47
· PERFIT A-Silicone for Laboratory	49
· PERFIT C-Silicone for Laboratory	50
· Part Number for Lab Material	51



ZIRCONIA

GM-3D Zirconia

MHT Zirconia

HT Zirconia



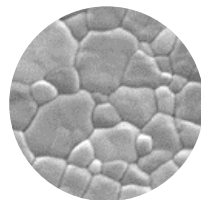


NOBILCAM GM-3D

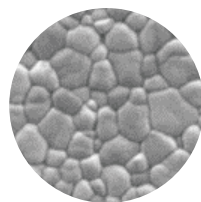
- Gradient Multilayer in 3 Dimensions: shade, strength and translucency.
- Optimally combine the raw 4Y and 5Y zirconia materials, ensuring outstanding accuracy of fit after sintering.
- Excellent incisal translucency improve the aesthetics of restorations.

• Seamless transition in 3 dimensions:

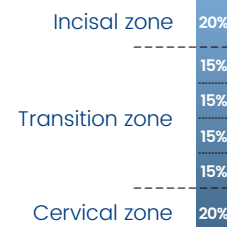
Natural color transition matches the natural color gradient of the tooth from cervical to incisal.
 Translucency from 43% incisal to 57% cervical
 Strength gradient from 700 Mpa to greater than 1050 Mpa



5Y-Highly translucent conditioned oxide-ceramic in the incisal area



4Y-Strong conditioned oxide-ceramic in the cervical area



1. Outstanding filling technology

The special filling technology allows NOBILCAM GM-3D Zirconia to offer seamless transition from dentin to enamel in color, translucency and strength. The premium esthetics and exceptional strength provides a "All-in-one Solution", eliminating the needs to carry multiple materials.

2. Professional conditioning

To ensure outstanding accuracy of fit and no distortion, we are concerned about the shrinkage of the raw 4Y and 5Y oxide-ceramic materials. During manufacturing process, the powder conditioning adjusts the sintering kinetics and make the materials combined optimally.

3. High-quality manufacturing

Advanced manufacturing process improves the quality of the product. Before pre-sintering process, every zirconia blanks would be sealed into a vacuum bag and pressed isostatically, which improves the microstructure of the material.



• Recommended applications

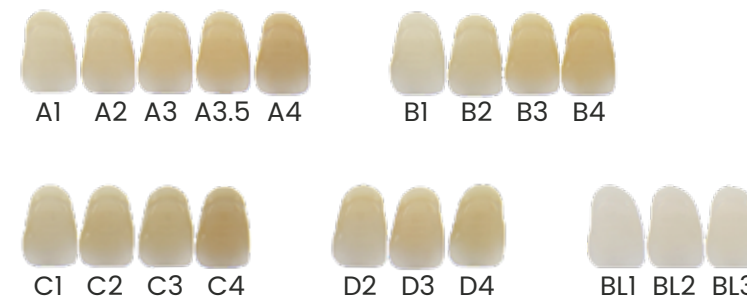
- Veneer
- Inlay & onlay
- Full anatomy crowns (anterior/posterior)
- Anatomically reduced crowns
- 3-unit bridge

• Technical Data

Flexural strength(3-point)	700-1050Mpa
Translucency	43%-57%
Coefficient of thermal expansion	$(10.2 \pm 0.5) \times 10^{-6} K^{-1}$
Chemical solubility	$< 100 \mu g \cdot cm^{-2}$
Vickers hardness	1250 HV10



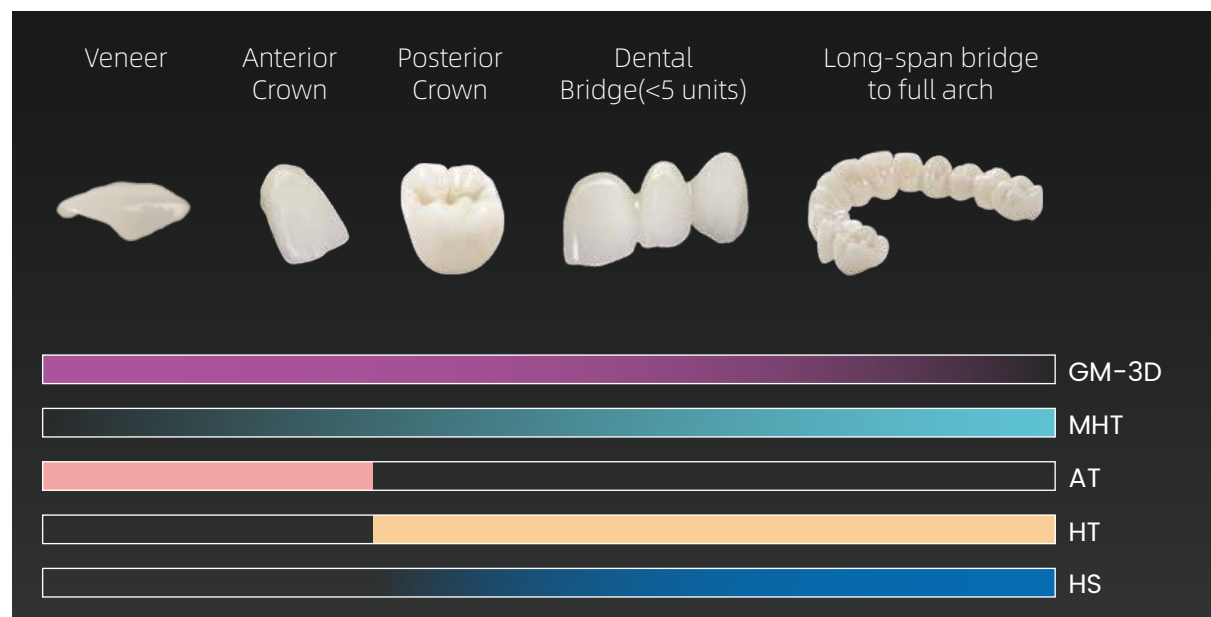
• Shades & Dimensions



	Dimension	A1	A2	A3	A3.5	A4	B1	B2	B3	B4	C1	C2	C3	C4	D2	D3	D4	BL1	BL2	BL3	
98GM3D12	98x12 mm																				
98GM3D14	98x14 mm																				
98GM3D16	98x16 mm																				
98GM3D18	98x18 mm																				
98GM3D20	98x20 mm																				
98GM3D22	98x22 mm																				
98GM3D25	98x25 mm																				

Part number = "Part Number Prefix" follow with shade. e.g. 98GM3D14-A3
Other sizes are available, please inquire.

- NOBILCAM offers different types of zirconia discs to cover every dental applications from veneers to long-span bridges.



Easy Cementation

- Vincismile TopCEM Elite System is specially designed for cementation of all sorts of metal and ceramic restorations.
- TopCEM Elite System works well with NOBILCAM Zirconia Discs, providing a simple and efficient solution with reliable bonding strength and outstanding esthetic effects.



• Features & Benefits

- Suitable for various substrates
- High flexural strength and bonding strength
- 3 opacity and 7 shades available



NOBILCAM MHT

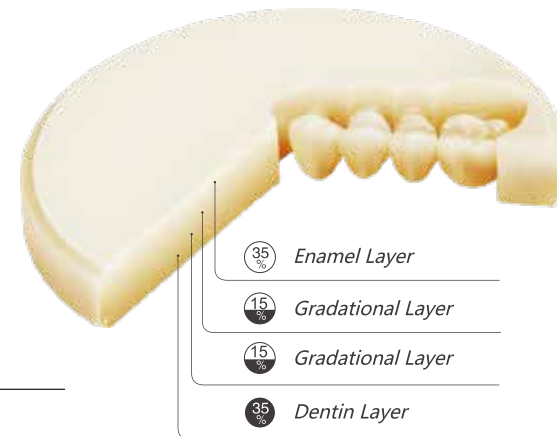
– Multilayer High Translucent

- With the flexural strength of over 900MPa, virtually all types of indications can be realized.
- The nice color gradient is a perfect imitation of natural tooth.
- Simplify the staining process in dental laboratory routines.



• Recommended applications

- Veneers
- Inlays & Onlays
- Full anatomy crowns
- Anatomically reduced crowns
- 3-unit to multi-unit bridge
- 3-unit to multi-unit bridge frameworks



• Technical Data

Flexural strength(3-point)	1000Mpa
Translucency	45%
Coefficient of thermal expansion	$(10.5 \pm 0.5) \times 10^{-6} \text{K}^{-1}$
Chemical solubility	$< 100 \mu\text{g} \cdot \text{cm}^{-2}$
Vickers hardness	1250 HV10

Part No. prefix	Dimension	A1	A2	A3	A3.5	A4	B1	B2	B3	B4	C1	C2	C3	C4	D2	D3	D4
98MHT14	98x14 mm	Part number = "Part Number Prefix" follow with shade. e.g. 98MHT14-A3 Other sizes are available, please inquire.															
98MHT16	98x16 mm																
98MHT18	98x18 mm																
98MHT20	98x20 mm																
98MHT25	98x25 mm																

NOBILCAM HT

– High Translucent

- Reproduce shades perfectly, ensuring the accuracy of color.
- Well-balanced combination of translucency and mechanical properties.
- Wide applications from crowns to bridges.



• Recommended applications

- Full anatomy crowns
- Anatomically reduced crowns
- 3-unit to multi-unit bridge
- 3-unit to multi-unit bridge frameworks
- Customized abutment
- Full-arch bridge



• Technical Data

Flexural strength(3-point)	1200Mpa
Translucency	43%
Coefficient of thermal expansion	$(10.5 \pm 0.5) \times 10^{-6} \text{K}^{-1}$
Chemical solubility	$< 100 \mu\text{g} \cdot \text{cm}^{-2}$
Vickers hardness	1250 HV10

Part No. prefix	Dimension	White	A1	A2	A3	A3.5	A4	B1	B2	B3	B4	C1	C2	C3	C4	D2	D3	D4
98HT12	98x12 mm	Part number = "Part Number Prefix" follow with shade. e.g. 98HT14-A3 Other sizes are available, please inquire.																
98HT14	98x14 mm																	
98HT16	98x16 mm																	
98HT18	98x18 mm																	
98HT20	98x20 mm																	
98HT25	98x25 mm																	

NOBILCAM AT

– Anterior Translucent

- Extremely high translucent for anterior restorations.
- High aesthetics.



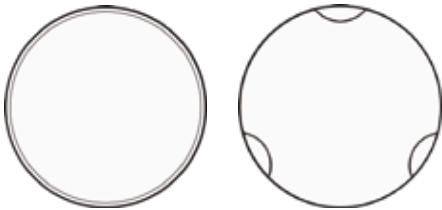
• Recommended applications

- Veneers
- Anterior crowns
- Anterior dental bridge (less than 3 units)



• Technical Data

Flexural strength(3-point)	600Mpa
Translucency	49%
Coefficient of thermal expansion	$(10.2 \pm 0.5) \times 10^{-6} \text{K}^{-1}$
Chemical solubility	$< 100 \mu\text{g} \cdot \text{cm}^{-2}$
Vickers hardness	1250 HV10

Part Number	Dimension	White
98AT12-White	98x12mm	Other sizes are available, please inquire. 
98AT14-White	98x14mm	
98AT16-White	98x16mm	
98AT18-White	98x18mm	
98AT20-White	98x20mm	
98AT25-White	98x25mm	

NOBILCAM HS

– High Strength

- Highest strength up to 1400Mpa.
- Good fracture resistance.
- Mills and polishes easily.



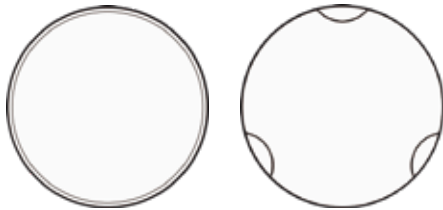
• Recommended applications

- coping & abutment
- 3-unit to multi-unit bridge
- 3-unit to multi-unit bridge framework



• Technical Data

Flexural strength(3-point)	1400Mpa
Translucency	40%
Coefficient of thermal expansion	$(10.5 \pm 0.5) \times 10^{-6} \text{K}^{-1}$
Chemical solubility	$< 100 \mu\text{g} \cdot \text{cm}^{-2}$
Vickers hardness	1250 HV10

Part Number	Dimension	White
98HS12-White	98x12mm	Other sizes are available, please inquire. 
98HS14-White	98x14mm	
98HS16-White	98x16mm	
98HS18-White	98x18mm	
98HS20-White	98x20mm	
98HS25-White	98x25mm	



PMMA

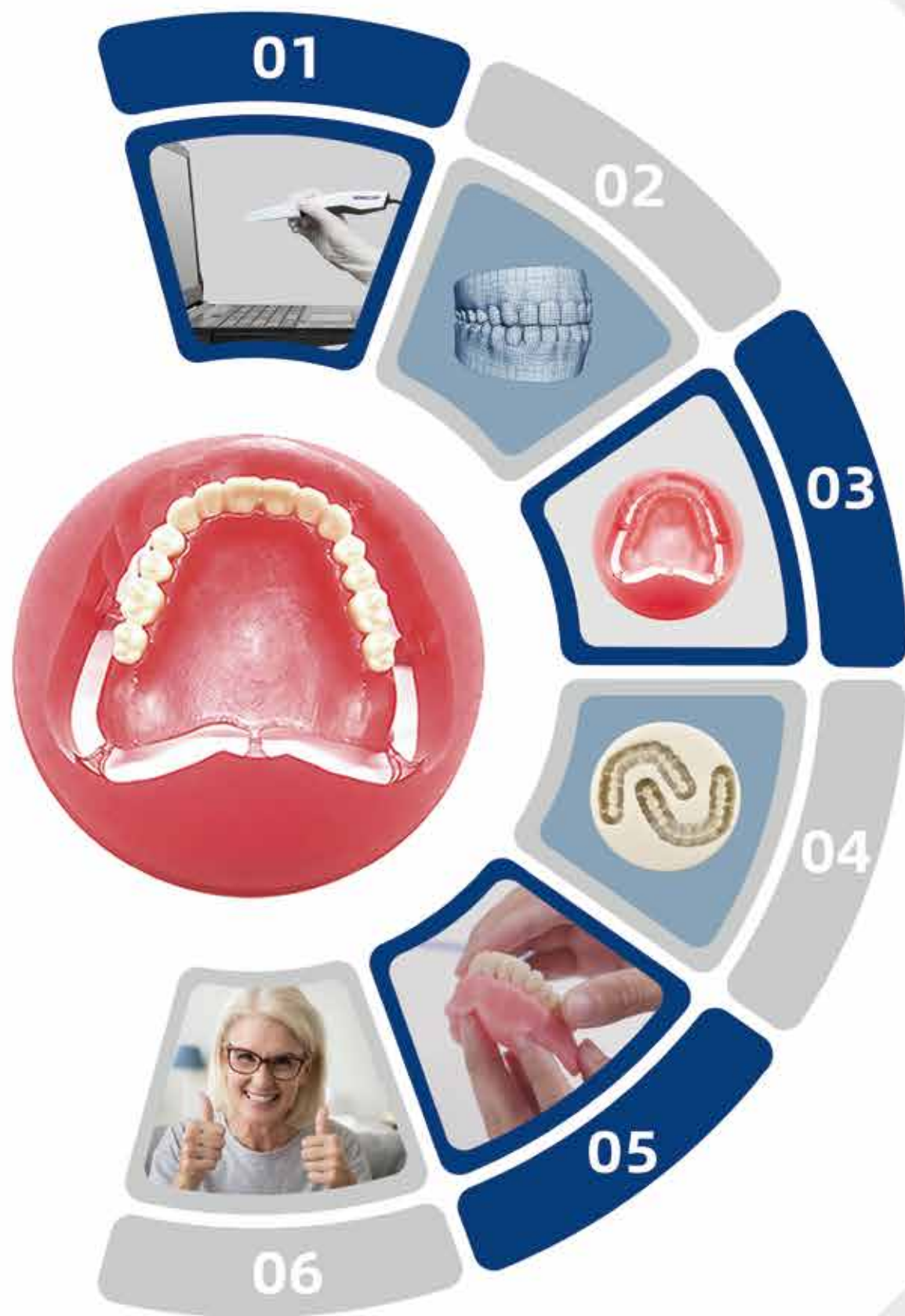
Multilayer PMMA

Monolayer PMMA

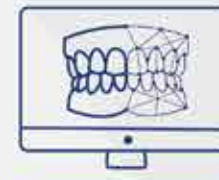
Clear PMMA

Pink PMMA



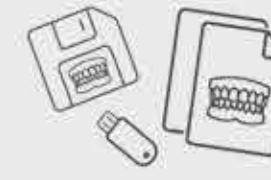


Advantages



Predictable

Avoid human error and more accurate



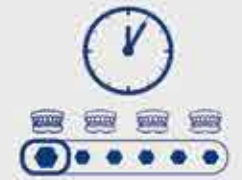
Faster

Production time is reduced from 15 to 8 days



Resource Saving

Not only labor but also storage space



Digital Copy

Store the information

Pink PMMA DISC

Removable structures for dentures (Denture Base)



4 Shades

2S

2ST

3S

3ST

Multilayer PMMA DISC

Removable structures for dentures (Dental Arch)



20 Shades

A1

B1

C1

D2

BL1

A2

B2

C2

D3

BL2

A3

B3

C3

D4

BL3

A3.5

B4

C4

BL4

A4

Seamless Gradient

NOBILCAM Multilayer PMMA DISC has a unique seamless gradient to make the color change smoothly from teeth neck to cut end.



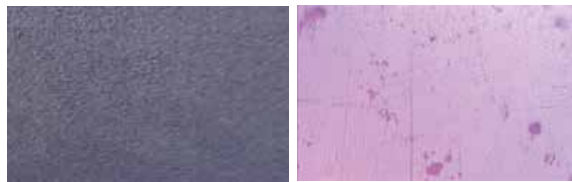
Unrivalled aesthetics effect bring you a excellent experience of Digital Full Denture.

NOBILCAM PMMA

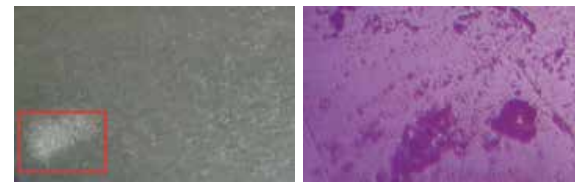
NOBILCAM PMMA discs are one of the best CAD/CAM PMMA products in dentistry in part due to the materials used and our mature manufacturing technology,

• Excellent compactness

According to the X-ray and optimal microscope pictures, there is no bubble or other impurities in NOBILCAM PMMA Discs. The highly cross-linked PMMA material ensures high gloss, wear-resistance, and ability to resist stain.



NOBILCAM PMMA



OTHER COMPETITORS

• Outstanding mechanical and chemical properties

NOBILCAM PMMA discs would improve your effectiveness during your fabrication. The outstanding properties also make the milled prostheses (crowns, bridges, dentures, and etc) last longer.

Properties	Parameter
Flexural Strength	>120Mpa
Modulus of Elasticity	>2200Mpa
Water Absorption	< 20µg/mm ⁻³
Water Solubility	< 0.8µg/mm ⁻³

• Comprehensive and accurate shade system

NOBILCAM PMMA products offer 22 shades for Multilayer PMMA disc and 24 shades for Monolayer PMMA disc, which are consistent with VITA shades guides.

Wide range of application thanks to:

- Outstanding mechanical and chemical properties
- Proven biocompatibility
- Aesthetic translucency
- Easy to fabricate

Recommended applications:

- Long-term temporary crown & bridge restorations (NOBILCAM Multilayer & Monolayer)
- Dental splints for therapeutic restorations of TMJs and bruxism (NOBILCAM Clear & Flexible)
- Digital denture & denture bases (NOBILCAM Pink & Full Denture)
- Guide for implant surgery (NOBILCAM Clear)





Monolayer PMMA

- Mills purely and polishes easily
- Easy to operate, stable and efficient
- Proven biocompatibility
- Accurately matched in 23 shades



Pink PMMA

- Perfectly suitable for making digital denture base
- Natural gingival appearance
- Low moisture absorption
- high strength



Clear PMMA

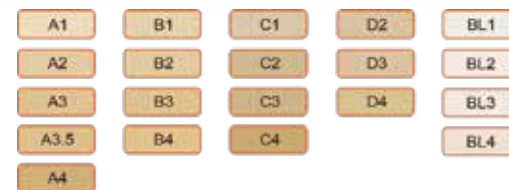
- Crystal clear surface
- High stain-resistance
- Low water absorption
- Burn out without any residue



Multilayer PMMA

The multilayer PMMA with shade gradient from dentin to incisal is suitable for natural and long-term temporary restorations.

- Seamless shade gradient makes the prostheses more natural and artistic.
- Highest esthetics due to accurately matched VITA 16 shades and BL shades.
- High-quality acrylic for long-term temporary restorations with a wearing time of up to 12 months.



Part No. prefix	SPEC.(mm)	A1	A2	A3	A3.5	A4	B1	B2	B3	B4	C1	C2	C3	C4	D2	D3	D4	BL1	BL2	BL3	BL4	
PMML9810	98x10 0 Step	Part number = "Part Number Prefix" follow with shade. e.g. PMML9814-A3 Other sizes are available, please inquire.																				
PMML9812	98x12 2 Steps																					
PMML9814	98x14 2 Steps																					
PMML9816	98x16 2 Steps																					
PMML9818	98x18 2 Steps																					
PMML9820	98x20 2 Steps																					
PMML9825	98x25 2 Steps																					
PMML9830	98x30 2 Steps																					
PMML9514	95x14																					
PMML9516	95x16																					
PMML9518	95x18																					
PMML9520	95x20																					
PMML9525	95x25																					
PMML9530	95x30																					

Part No. prefix	SPEC.(mm)	A0	A1	A2	A3	A3.5	A4	B1	B2	B3	B4	C1	C2	C3	C4	D1	D2	D3	D4	(0)Clear	2S	BL1-4
PMSL9810	98x10 0 Step	Part number = "Part Number Prefix" follow with shade. e.g. PMML9814-A3 Other sizes are available, please inquire.																				
PMSL9812	98x12 2 Steps																					
PMSL9814	98x14 2 Steps																					
PMSL9816	98x16 2 Steps																					
PMSL9818	98x18 2 Steps																					
PMSL9820	98x20 2 Steps																					
PMSL9825	98x25 2 Steps																					
PMSL9830	98x30 2 Steps																					
PMSL9514	95x14																					
PMSL9516	95x16																					
PMSL9518	95x18																					
PMSL9520	95x20																					
PMSL9525	95x25																					

NOBILCAM Flexible Disc

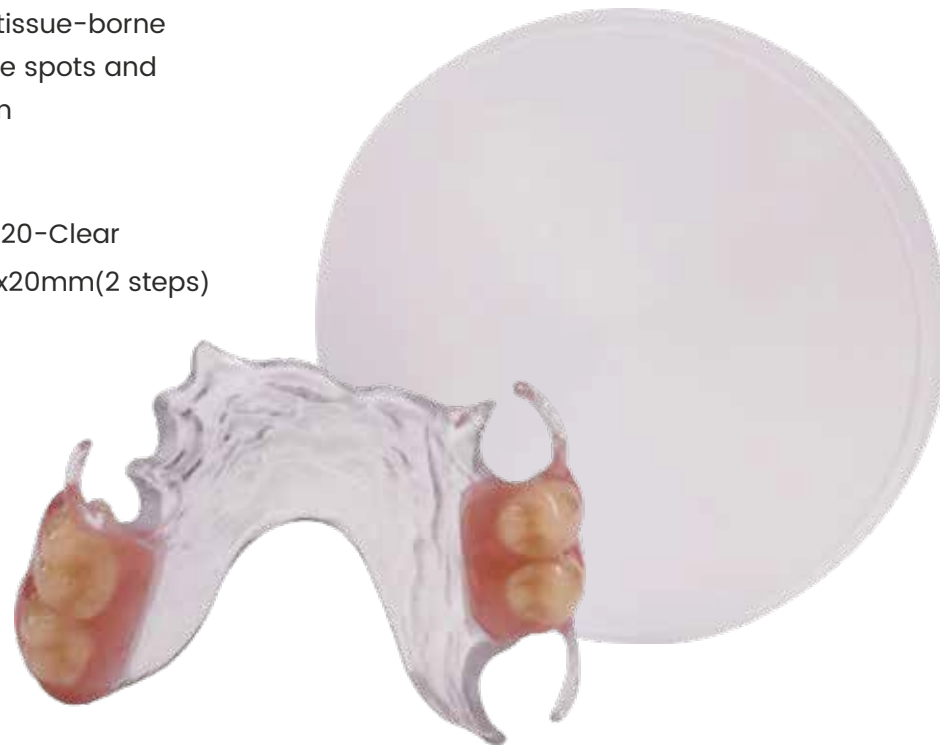
NOBILCAM Flexible Discs (Nylon resin) are intended for aesthetically superior semi-flexible removable partial denture frameworks, which blend perfectly with the patient's gums, providing better function, aesthetics, comfort and durability.

- Esthetic, comfortable and light weight
- 100% digital for accurate fit
- Occlusal rests reduce tissue-borne pressure to reduce sore spots and offer excellent retention

Part Number: FLD9820-Clear

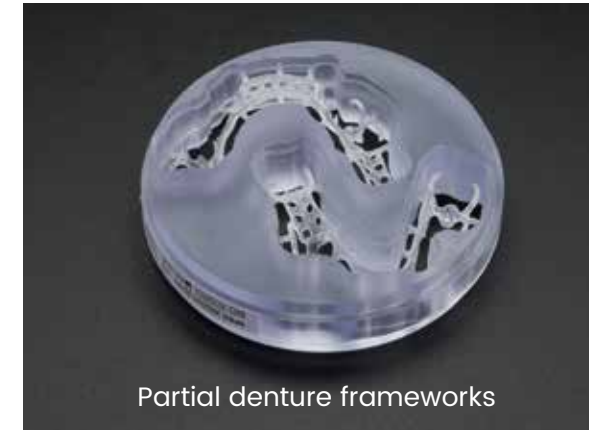
Dimensions: 98mmx20mm(2 steps)

Shade: Clear



	NOBILCAM Flexible Disc	Competitor
Bending Strength (Mpa)	1187.0	1123.5
Bending Modulus (Mpa)	83.1	78.1
Impact Strength (KJ·m ⁻²)	52.6	52.4
Elongation at Break	66.97%	62.3%
Water absorption	2.06%	2.54%

Recommended applications



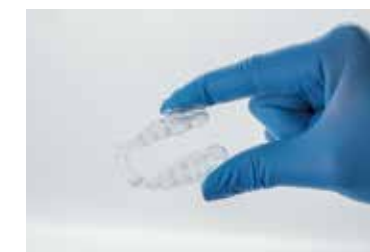
Flexible partial denture

NOBILCAM Flexible discs are suitable to make the framework of partial dentures. The flexible partial dentures would be superior to metal partials because they are unbreakable and comfortable to wear.



Flexible bite splint

NOBILCAM Flexible material is practically unbreakable and therefore suitable for bite splint with only 0.5 mm thickness, which could improve the wearing experience for patients.



Vinci 3D Dental Model (3D Printing materials)

• Applications

Crown, bridge, and implant models

• Color: ■ Orange

Diagnostic modeling

• Advantages

- High building speed
- High construction precision
- High dimensional stability
- High surface hardness;
- Low viscosity
- Good biocompatibility

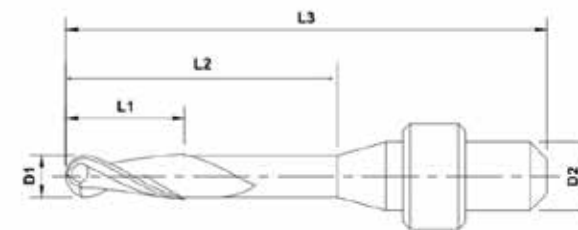


Suitable for various equipment
such as DLP/LCD

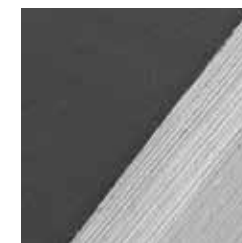
Milling Burs

NOBILCAM milling burs are made by High-Quality solid carbide, compatible with most CAD/CAM machines or systems. It is your ideal choice for milling Zirconia, metal, Lithium Disilicate, PMMA and other Resin materials. The coating of burs is to extend the service life.

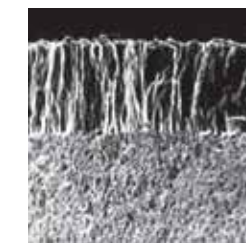
- Premium Carbide Raw Material
- Long Tool-life
- Excellent Stability
- Available for Various Systems and Materials



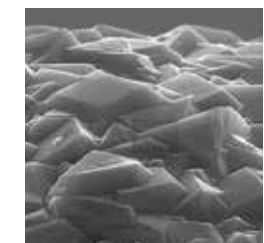
• Under the microscope



Razor sharp edges



DC: Ultra-stable
coating protection



DC: Uniform
coating surface



SYNTHETIC POLYMER TEETH

NOBILDENT Prime DXL

NOBILDENT Select XL



NOBILDENT Prime DXL

Expression of natural beauty and high practicality



• Applications

- Making removable full denture
- Making removable or fixed partial denture

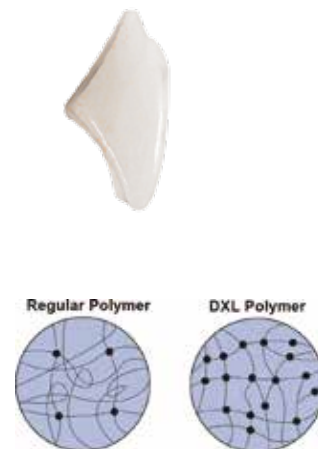
• Advantages

Natural Beauty

- Life-like blend of shade and translucency

Wear-Resistance Like No Other

- High molecular weight Double Cross-Linked (DXL)
- Hard layer on occlusal surfaces



Familiar Forms and Enough Models

- Familiar teeth forms covering square, tapering and ovoid shapes
- Totally 53 models with different sizes offered to choose
- Various posteriors with different maxillary cusp angles: 28°, 33°, 20°, 10°, 0°

Easy to Use

- Easy to set-up posteriors
- No-wax carding, no need to wipe-off wax
- Concave ridge lap, mechanical retention built-in



• Moulds and shades

- 13 upper anterior moulds: S3, S4, S5, T1, T3, T5, T6, T7, T9, T11, T12, O5, O8
- 8 lower anterior moulds: L1, L2, L4, L5, L6, L7, L11, L14
- 32 posterior moulds:
 - 28°: 30U 30L 32U 32L 34U 34L 36U 36L
 - 33°: 30MU 30ML 32MU 32ML 34MU 34ML
 - 20°: 229U 229L 231U 231L 233U 233L
 - 10°: 130U 130L 132U 132L 134U 134L
 - 0°: 029U 029L 031U 031L 033U 033L
- 18 Shades:** A00, A0, classical 16 A-D

• Delivery forms



6x1/card (6pcs/card)



8x1/card (8pcs/card)



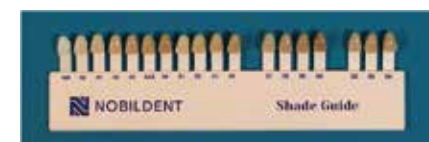
Anterior: 6x1x16/box (6pcs/card, 16cards/box)



Posterior: 8x1x12/box (8pcs/card, 12cards/box)

• Accessories

Teeth Shade Guide ▼

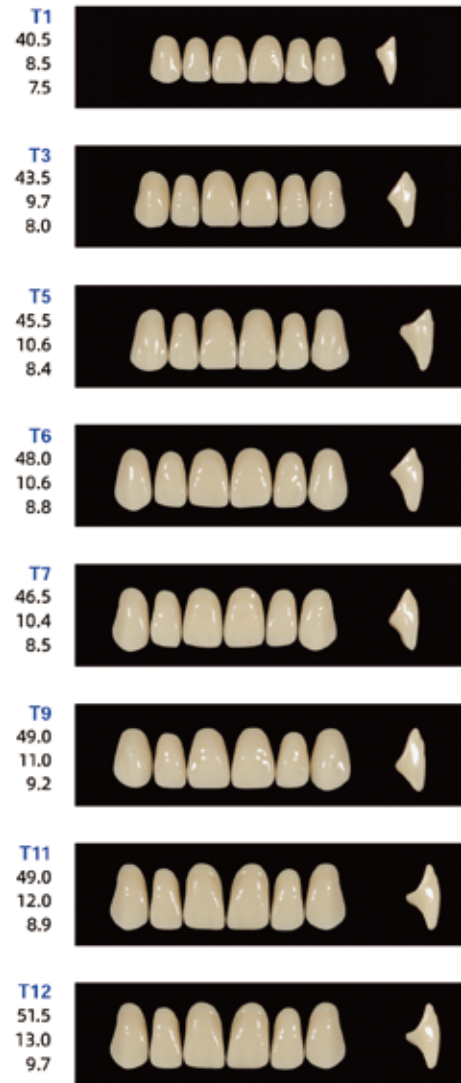


Teeth Living Mould Guide ▼

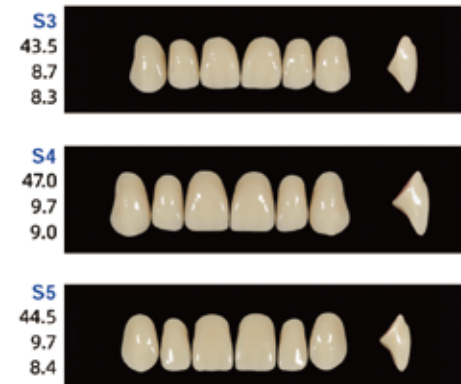


* See page 43 for part number.

UPPER ANTERIOR TAPERING



UPPER ANTERIOR SQUARE



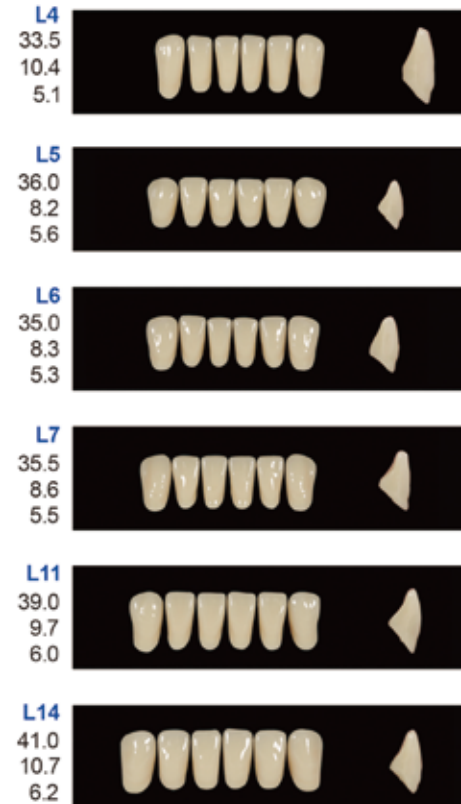
UPPER ANTERIOR OVOID



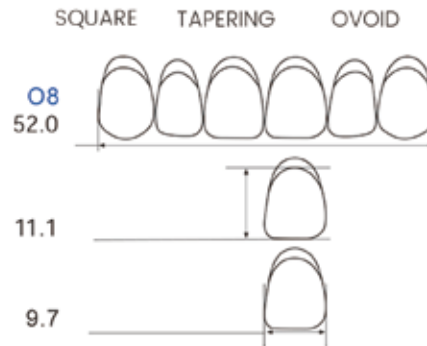
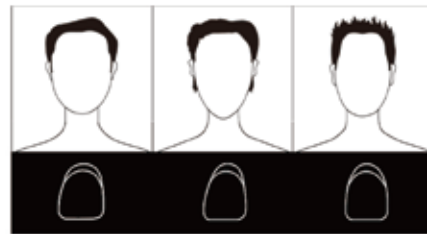
LOWER ANTERIORS



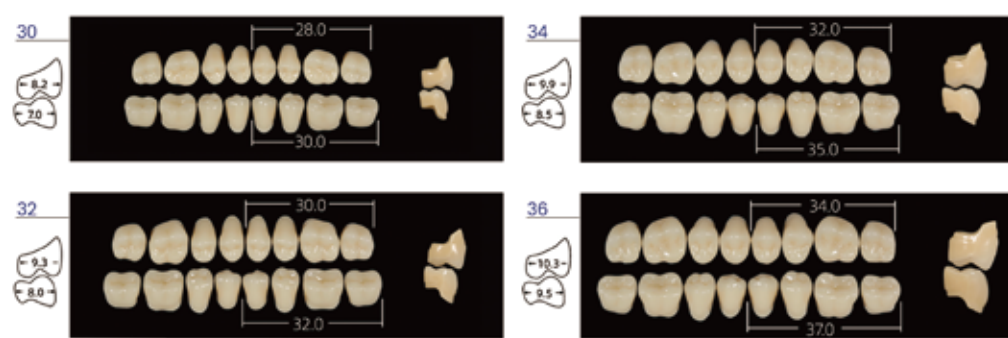
LOWER ANTERIORS



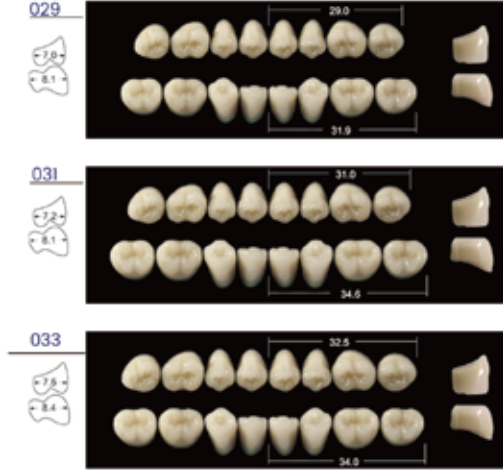
All measurements in millimeters



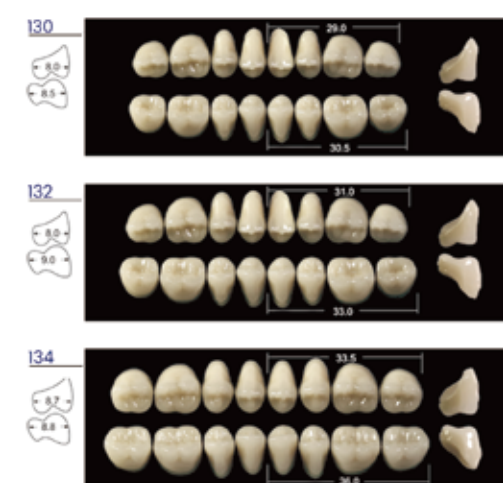
28° POSTERIOR



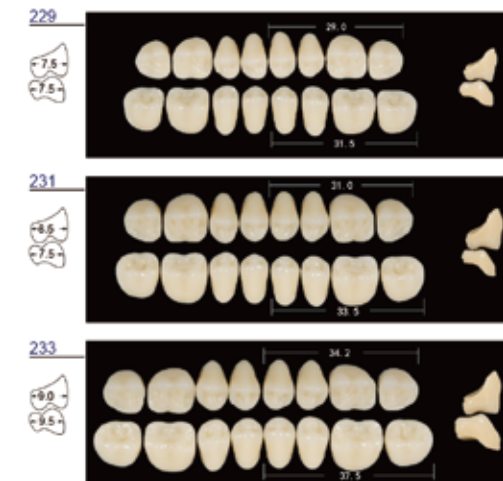
0° POSTERIOR



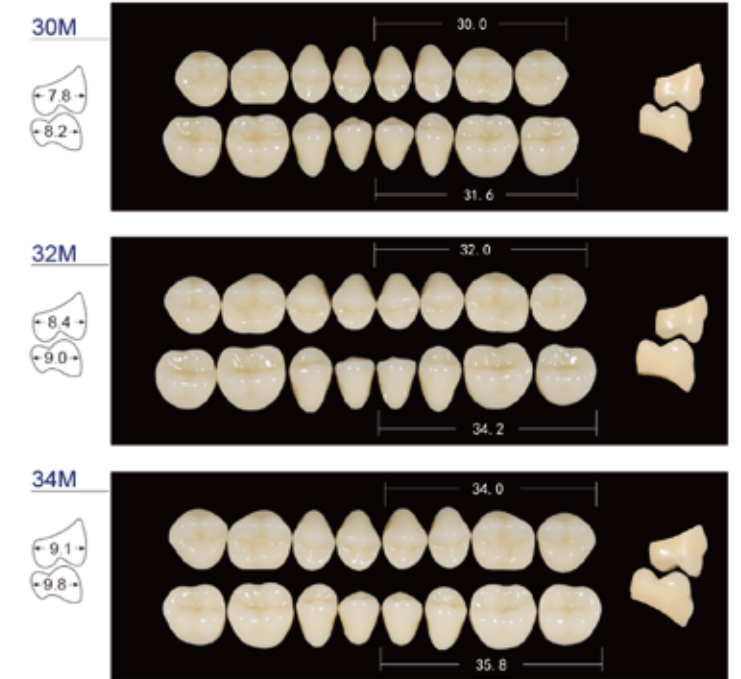
10° POSTERIOR



20° POSTERIOR



33° POSTERIOR



SUGGESTED ARTICULATIONS

UPPER ANTS	LOWER ANTS	POSTS 28° (Standard)	POSTS 33° (Optional)	POSTS 20° (Optional)	POSTS 10° (Optional)	POSTS 0° (Optional)
S3	L6	30	30M	229	130	029
S4	L4	32	30M	229	130	029
S4	L5	32	30M	229	130	029
S5	L6	32	32M	231	130	029
O5	L5	34	32M	231	132	031
O8	L14	36	34M	233	134	033
T1	L1	30	30M	229	130	029
T3	L2	30	30M	229	130	029
T5	L7	32	30M	229	130	029
T6	L5	32	30M	229	130	029
T7	L5	32	30M	229	130	029
T9	L11	34	32M	231	130	029
T11	L11	34	32M	231	132	031
T12	L14	36	34M	233	132	031

NOBILDENT Select XL

A classic tooth line made from PMMA resin with reliable quality



• Applications

- Making removable full denture
- Making removable or fixed partial denture

• Advantages

Natural Beauty

- Life-like blend of shade and translucency



High-performance property

- Excellent shade stability
- Low affinity to plaque

Reliable Shade Control System

- Strict human verification
- Second machine inspection

Easy to Use

- Easy to set-up posteriors
- No-wax carding, no need to wipe-off wax



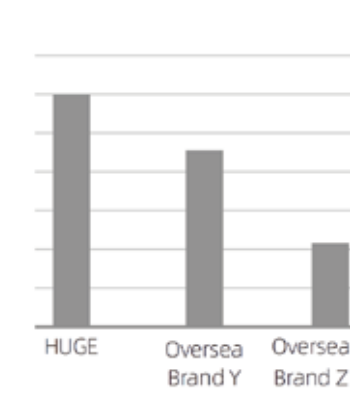
• Moulds and shades

- 7 upper anterior molds: T2, T6, T7, T8, T9, T10, S8
- 6 lower anterior molds: L2, L6, L7, L8, L9, L10
- 8 posterior molds: 30U, 30L, 32U, 32L, 34U, 34L, 36MU, 36ML

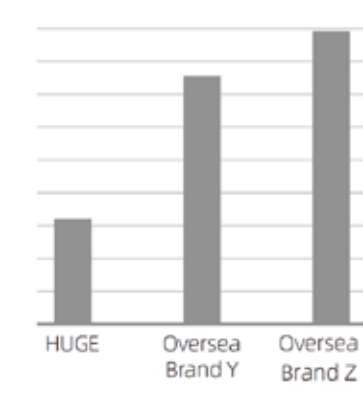
Shades available: A1, A2, A3, B1

• Technical features

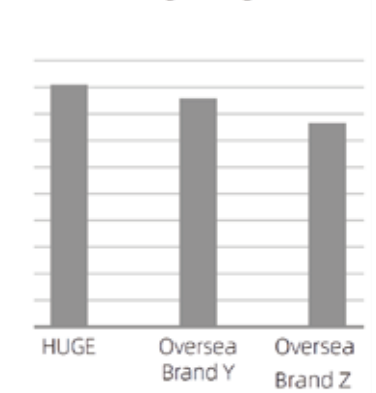
Vickers Hardness/HV0.2



Staining Test/ ΔE



Bonding Strength/N



• Delivery forms



Anterior: 6x16/box (6pcs/card, 16cards/box)



Posterior: 8x12/box (8pcs/card, 12cards/box)

* See page 43 for part number.

• Accessories

Teeth Living Mould Guide ▼





SUGGESTED ARTICULATIONS

UPPER ANTERIORS	LOWER ANTERIORS	POSTERIOR 28°/33°
T2	L2	30
T6	L6	32
T7	L7	32
T8	L8	34
T9	L9	*36M
T10	L10	*36M
S8	L8	34

UPPER ANTERIOR TAPERING

T2 39.5 8.5 7.0	
T6 43.0 10.0 8.0	
T7 45.6 10.9 8.4	
T8 46.8 10.3 8.7	
T9 47.5 12.0 8.5	
T10 50.8 11.0 9.3	

ACTUAL SIZE All measurements in millimeters

UPPER ANTERIOR SQUARE

S8
47.0
10.1
8.6

LOWER ANTERIORS

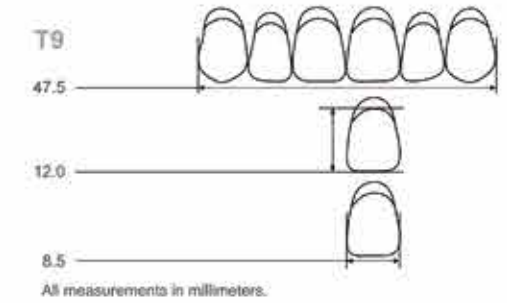
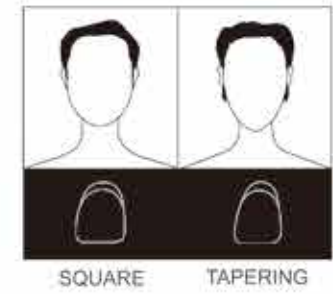
L2 28.7 7.3 4.5	
L6 33.4 9.0 4.8	
L7 34.4 9.4 5.3	
L8 35.3 9.3 5.4	
L9 37.1 9.5 5.6	
L10 37.6 9.7 5.8	

28° POSTERIORS

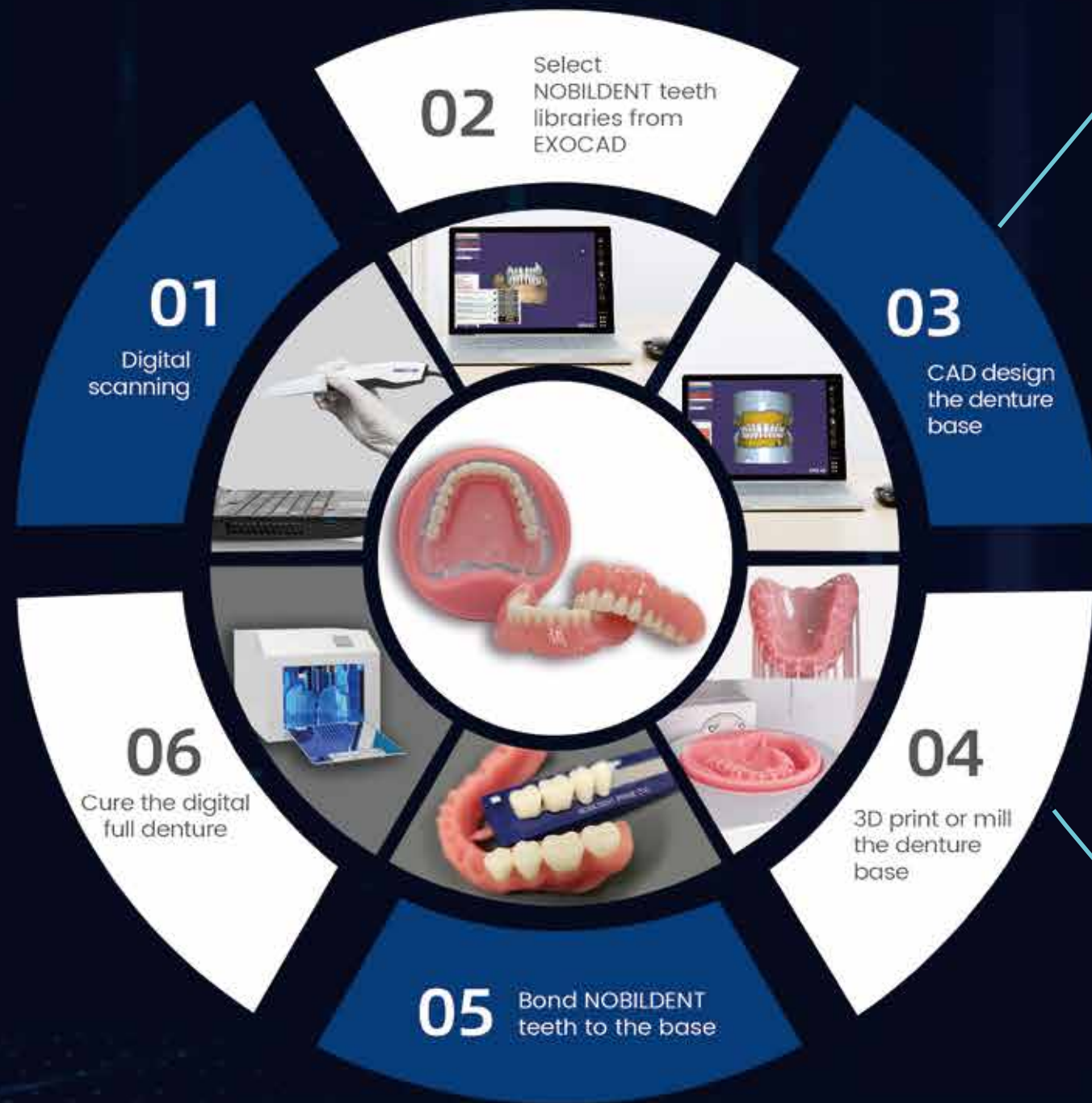
30 8.0 7.0	
32 9.0 8.0	
34 9.6 8.5	
*36M 8.9 10.0	

33° POSTERIORS

All measurements in millimeters



Digital Denture Workflow



▶ Download NOBILDENT Teeth Libraries

<https://exocad.com/cn/integration/full-denture-tooth-libraries#/all/tag-v>



▶ NOBILDENT Prime DXL

Artificial denture teeth for digital denture



- Vivid natural aesthetics
- Excellent wear-resistance
- 18 Shades available:
Classical 16 A-D and A0, A00 with bleaching effect



Easy Ordering with NOBILDENT TEETH ASAP

Convenient · Practical · Efficient



In order to help our customers place orders more easily and quickly, Nobildent launched a special app for placing orders, the TEETH ASAP. Not only being convenient to place orders, the app is also a quick mould guide showing the actual size and shape of all Nobildent teeth. Combined with the barcode in the Teeth Cabinet, customers can stock teeth cards easily with the barcode scanning function of the TEETH ASAP.

TEETH ASAP Mobile APP for Placing

- 01 Select to order by clicking on teeth moulds
- 02 Scan barcodes to order with camera



NOBILDENT Order Channels

DOWNLOAD
TEETH ASAP



Web order: store.vincismile.com
 App order: TEETH ASAP
 Contact Sales: per business card info
 Email: marketing@vincismile.com
 Phone: 626 283 5808



Automated Mass Production

For manufacturers, production capacity is an important indicator of their strength. The manufacturer for NOBILDENT denture teeth stands out in production capacity with its impressive automated production machinery.

Being completely self-designed and manufactured, the machinery is able to achieve a mass production capacity of 35,000 teeth per day, three times the manual capacity.

This is not only a reflection of our strength, but more importantly, it can greatly improve production, shorten the order delivery time and deliver the goods to the customer as soon as possible.



DENTURE BASE POLYMERS



Denture Base Polymers

Vivid Natural Aesthetics



Through particular multidirectional rotation compounding process, this product is made by imported high-quality PMMA resin with bionic vascular stria added. Characterized by lifelike beauty and reliable quality, the product is ideal for making denture bases.

• Shades available



• Applications

- Applied to make denture base for full denture, partial denture and implant-supported denture

• Advantages

- Lifelike natural outlook
- Drop, shrink and dissolve-resistant
- No bubbles
- Cadmium-free



• Self Curing Type

- o No heating required
- o No bubbles
- o Natural and lifelike
- o 30-min curing time

• Traditional Heat Curing Type

- o Pliable texture
- o Various shade options
- o Shrink-resistant
- o Natural aesthetics



• Fast Heat Curing Type

Fast

- Efficient **20-min** curing with water-bath heating saves technicians' time and energy

Unbreakable

- No fracturing appeared when put through testing

Shrink-Resistant

- Good stability after curing ensures the accuracy of duplicates

No Bubbles

- High quality finished products with no visible bubbles

Natural and lifelike

- Addition of bionic veined pigment achieves a natural and lifelike outlook

* See page 43 for part number.

* Restricted by the transportation control of hazardous chemicals, only powder is available for now.

• Packaging



1 kg/box, 10 bags/box



1 kg/tub, 1 bag/tub



LIGHT CURING MATERIAL

NOBILTRAY

NOBILCURE



NOBILTRAY

• Applications

- Making individual trays
- Making temporary base plates

• Advantages

- Easy operation
- High plasticity
- Fast setting
- High precision
- Low deformation rate



• Variants

- Shades available: pink
- Thickness available: 2.3mm, 2.0mm

• Packaging

Standard package



50pcs / box

Trial package



2pcs / bag

NOBILCURE

• Applications

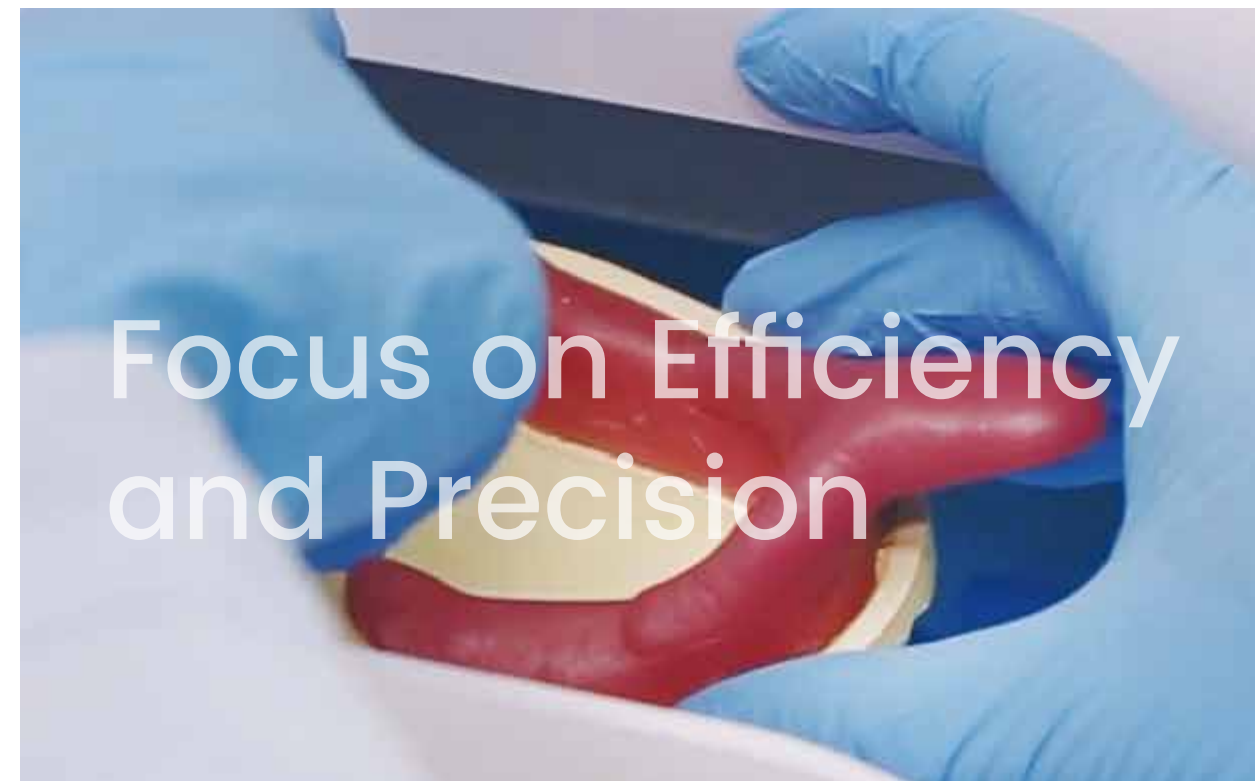
- Applied to set Light Curing Tray material

• Advantages

- Easy operation
- 3min fast setting
- High polymerization capacity
- Voltage available: 110V and 220V

• Packaging

- one unit / box



* See page 45 for part number.



DUPLICATION SILICONES

A-Silicone for Gingival Mask

A-Silicone for Laboratory

C-Silicone for Laboratory



A-Silicone for Gingival Mask

GumEasy™



• Applications

- Used in the implant restoration process
- Used in the crown and bridge restoration process

• Advantages

- Precise detail reproduction
- High mechanical strength
- Excellent esthetic results
- Compatible with various techniques(direct and indirect)





* See page 45 for part number.

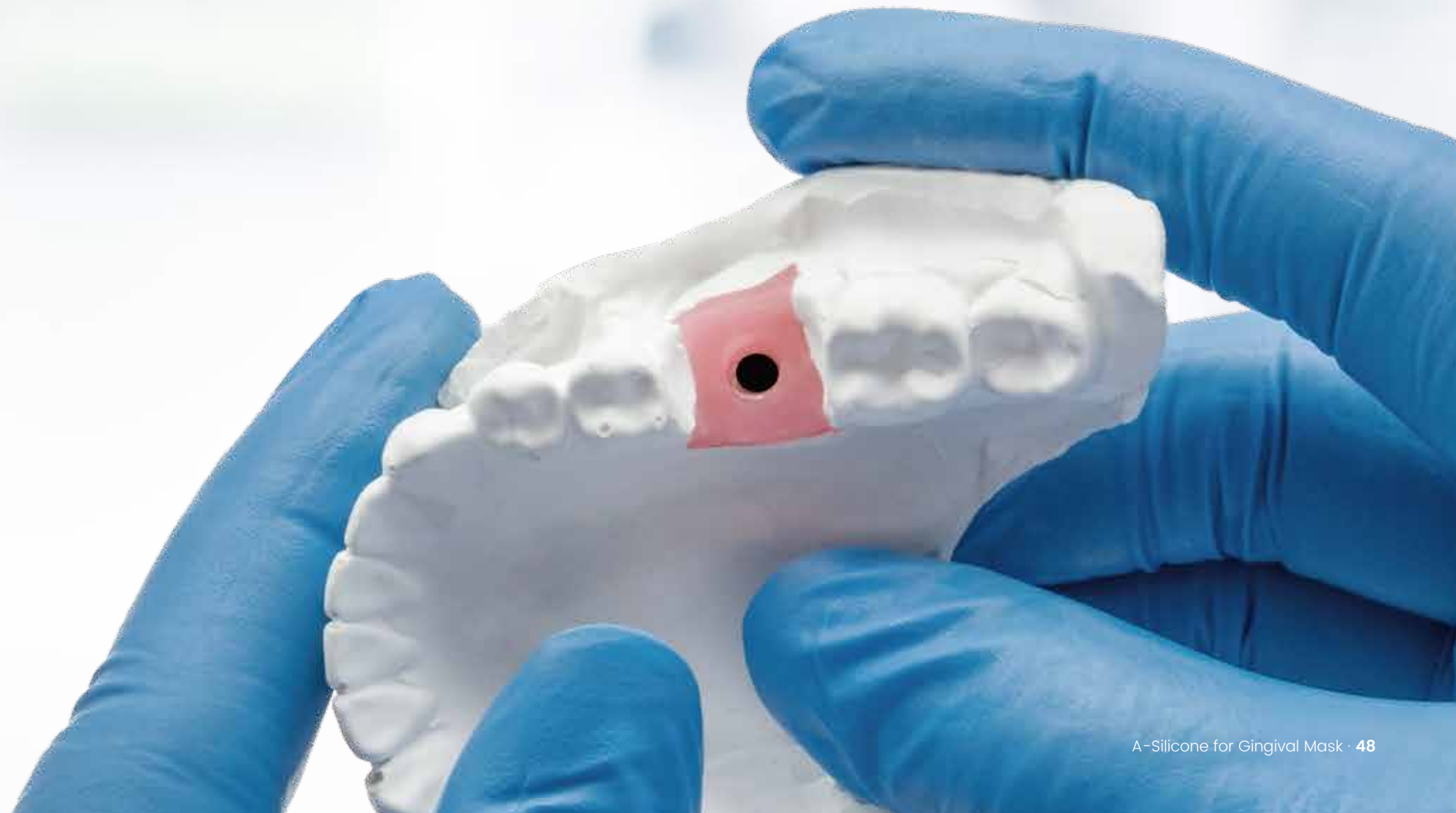
Technical features

Product	Mixing ratio (Base: Catalyst)	Working time* (min:s)	Setting time* (min:s)	Hardness (Shore A)
A-Silicone for Gingival Mask (Hard Type)	1:1	1:30	10:00	70
A-Silicone for Gingival Mask (Soft Type)	1:1	1:30	10:00	40

* The times mentioned above are intended from the start of the mixing phase at 23°C (73°F).

Packaging

Types	Description
Standard	 (2×50ml)
Elite kit	 (2×50ml+12 mixing tips+12 intraoral tips+1*10ml separator)



A-Silicone for Laboratory

Alpha^{lab}™



• Applications

- Duplicating complete or partial denture models
- Making temporary prosthetic works
- Creating artificial gingiva on the model
- Matrix for esthetic veneer restoration

• Advantages

- Easy mixing ratio 1:1
- High detail replication
- Reliable dimensional stability over time
- Resistant to high temperature
- Available hardness; Shore A 85






Technical features

Mixing ratio	Mixing time*	Total working time*	Setting time*	Hardness	Color
1:1	30s	1 min 30s	8 min	Shore A 85/Shore A 90	Blue/Light Blue

* The specified times may vary depending on the operating temperature and technique.

Packaging

Types	Description
Standard tub	 (5kg tub Base+ 5kg tub Catalyst)
Standard can	 (450g can Base + 450g can Catalyst)
Sample can	 (50g can Base + 50g can Catalyst)

* See page 45 for part number.

C-Silicone for Laboratory

Alpha^{lab}™



• Applications

- Duplicating complete or partial denture models
- Making temporary prosthetic works
- Creating artificial gingiva on the model
- Matrix for esthetic veneer restoration

• Advantages

- Low deformation rate
- Available hardness: Shore A 85 and Shore A 90






Technical features

Mixing time*	Total working time*	Setting time*	Hardness	Color
30s	2 min	7 min	Shore A 85/Shore A 90	Gray Pink

* The specified times may vary depending on the operating temperature and technique.

Packaging

Types	Description
Standard big tub	 (10kg tub Base+ 5*40g tube Catalyst)
Standard medium tub	 (5kg tub Base + 2*40g tube Catalyst)
Sample can	 (50g can Base + 3g tube Catalyst)

* See page 45 for part number.

Part Number for Lab Materials

Category	Description	Sub Description	Part Number
Synthetic Polymer Teeth	NOBILDENT Prime Denture Teeth	Upper Anterior, One card, 6x1	NAUShadeMould ^[1]
	NOBILDENT Prime Denture Teeth	Lower Anterior, One card, 6x1	NALShadeMould
	NOBILDENT Prime Denture Teeth	Upper Posterior, One card, 8x1	NPUShadeMould
	NOBILDENT Prime Denture Teeth	Lower Posterior, One Card, 8x1	NPLShadeMould
	NOBILDENT Select Denture Teeth	Upper Anterior, One Box with 16 cards , 6x16	NSLAUShadeMould ^[2]
	NOBILDENT Select Denture Teeth	Lower Anterior, One Box with 16 cards , 6x16	NSLALShadeMould
	NOBILDENT Select Denture Teeth	Upper Posterior, One Box with 12 cards , 8x12	NSLPUShadeMould
	NOBILDENT Select Denture Teeth	Lower Posterior, One Box with 12 cards , 8x12	NSLPLShadeMould
Denture Base Polymers	NOBILDENT Denture Base Polymers, Traditional Heat Curing	1000g/Can	NOBILBASE-TH-C
	NOBILDENT Denture Base Polymers, Traditional Heat Curing	10 bags/Box, 100g/bag	NOBILBASE-TH-B
	NOBILDENT Denture Base Polymers, Fast Heat Curing	1000g/Can	NOBILBASE-FH-C
	NOBILDENT Denture Base Polymers, Fast Heat Curing	10 bags/Box, 100g/bag	NOBILBASE-FH-B
	NOBILDENT Denture Base Polymers, Self Curing	1000g/Can	NOBILBASE-SC-C
	NOBILDENT Denture Base Polymers, Self Curing	10 bags/Box, 100g/bag	NOBILBASE-SC-B

^[1] NAUShadeMould interpreted as “NOBILDENT Anterior Upper plus names of shade and mould”. e.g. NAUA2S3 is the part number for NOBILDENT Prime DXL upper anterior teeth S3, and the shade is A2.

^[2] NSLAUShadeMould interpreted as “NOBILDENT Select XL Anterior Upper plus the name of shade and mould”. e.g. NSLAUAIT2 is the part number for NOBILDENT Select XL upper anterior teeth T2, and the shade is A1.

Part Number for Lab Materials

Category	Description	Sub Description	Part Number
Light Curing Material	NOBILTRAY, Light Curing Tray, Thin, Pink	50pcs/Box	NOBILTRAY-TN-P50
	NOBILTRAY, Light Curing Tray, Thick, Pink	50pcs/Box	NOBILTRAY-TK-P50
	NOBILTRAY, Light Curing Tray, Thin, Pink	2 pcs/bag	NOBILTRAY-TN-P2
	NOBILTRAY, Light Curing Tray, Thick, Pink	2 pcs/bag	NOBILTRAY-TK-P2
	NOBILTRAY, Light Curing Tray, Thin, Blue	50pcs/Box	NOBILTRAY-TN-B50
	NOBILTRAY, Light Curing Tray, Thick, Blue	50pcs/Box	NOBILTRAY-TK-B50
	NOBILTRAY, Light Curing Tray, Thin, Blue	2 pcs/bag	NOBILTRAY-TN-B2
	NOBILTRAY, Light Curing Tray, Thick, Blue	2 pcs/bag	NOBILTRAY-TK-B2
	NOBILCURE, Light Curing Unit	1 set/Box	NOBILCURE
Duplication Silicones	A-Silicone for Gingival Mask	Bio-cartridges 50mlx2	PERFIT-GM
	A-Silicone Duplication Material 5kgx2	Base 5kg+Catalyst 5kg +2 measuring spoons	PERFIT-ADPL5
	A-Silicone Duplication Material Sample Kit	Base 50g+Catalyst 50g	PERFIT-ADPLK
	C-Silicone Duplication Material 5kg+40g×2	Base 5kg+Catalyst 40gx2 +1 measuring spoon	PERFIT-CDPL5
	C-Silicone Duplication Material Sample Kit	Base 50g+Catalyst 3g	PERFIT-CDPLK